

---

# GILSON ENGINEERING

## O&G UPSTREAM INDUSTRY GUIDE

---

[www.gilsoneng.com](http://www.gilsoneng.com)



### Instrumentation and Control Products for Gas Production & Transmission Companies

#### **PITTSBURGH, PA**

535 Rochester Road  
Pittsburgh, PA 15237  
p (412) 369-0100  
f (412) 366-1728

#### **COLUMBUS, OH**

2697 Sawbury Blvd  
Columbus, OH 43235  
p (614) 889-2150  
f (614) 889-6038

#### **CLEVELAND, OH**

4660 Main Hill Drive  
Seven Hills, OH 44131  
p (440) 543-0300  
f (440) 543-1230

#### **CINCINNATI, OH**

10984 Main Street #1  
Cincinnati, OH 45241  
p 800-860-4499  
f (412) 348-3042

#### **CHARLESTON, WV**

3501 MacCorkle Ave SE #143  
Charleston, WV 25302  
p (304) 342-0012  
f (304) 342-0085

#### **TOLEDO, OH**

26953 Mingo Drive  
Perrysburg, OH 43551  
p (419) 874-1178  
f (419) 874-5333

#### **LOUISVILLE, KY**

2149 Winston Avenue  
Louisville, KY 40205  
p 800-860-4499  
f 412-348-3042

#### **Michigan, OH**

3069 Biber St, Apt 06  
East Lansing, MI 48823  
p 248-417-1102

#### **ORLANDO, FL**

144 Harston Ct  
Heathrow, FL 32746  
p (407) 444-0334  
f (407) 444-0335

#### **TAMPA, FL**

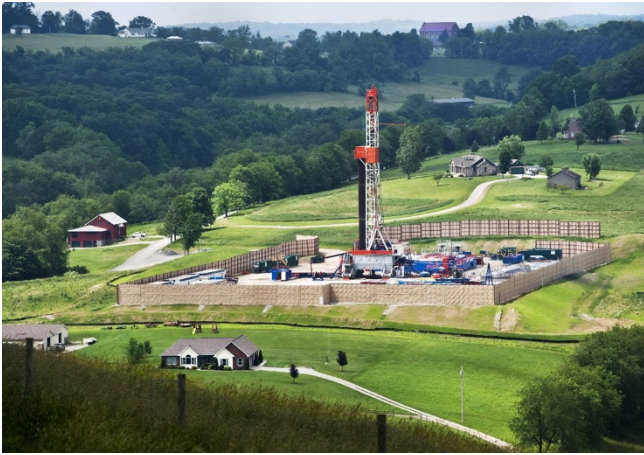
6329 Knob Tree Drive  
Lithia, FL 33547  
p 800-860-4499  
f (407)444-0335

#### **MIAMI, FL**

1155 97<sup>th</sup> St #201  
Bay Harbor Is, FL 33154  
p 800-860-4499  
f (407)444-0335

#### **JACKSONVILLE, FL**

12369 Burgess Hill Drive  
Jacksonville, FL 32246  
p 800-860-4499  
f (407)444-0335



# Well Pads

## WELL HEAD

Tubing and Casing Pressure: Siemens P320, Wika E10

Plunger Arrival Sensor: Turck Proximity Sensors

Solenoid: Jordan Valve

Valves: Jordan Regulators, Jordan high pressure control valves

Wiring: Turck Hazardous Area Quick Disconnects(Process Wiring)

Wireless: Banner DX99, OleumTech

Hazardous Area Process Displays: Precision Digital PD8-6000, PD8-765;

Modbus Input Display PD8-6080

Gauges: Wika Temperature Gauges and Wika Pressure Gauges

# Gas Processing Units



Choke: Jordan high pressure control valves

Wireless Monitors: Banner DX99, OleumTech

Hazardous Area Wiring: Turck Process Wiring

Level Switches for Dump Control: Siemens CLS200/300 and LVL200

Gas and Flame Detection: MSA X5000, General Monitors S5000; Altair4XR

Produced Fluid Flow: Siemens Mag3100/FC410, Veris Accelabar

Pressure Switches: Neo-dyn 100P

Visual Site Glass: Quest-Tec Magnetrac

Pneumatic Controller: Jordan Mk10/11

**RTU: Unitronics/PULS/Turck**

**Hazardous Area Process Displays: Precision Digital PD8-6000; Modbus Input Display PD8-6080**

**Temperature Transmitters: Moore Industries RTI2, Siemens TF**

**Gauges: Wika Temperature Gauges and Wika Pressure Gauges**

## **Produced Fluid Tank Battery**



**Level Monitoring: Float Level Probe(Electrolab 2100), Radar LR100,**

**Radar(LR250FEA), Ultrasonic(ProbeLU), Pressure P320**

**Wireless for Level or Other: Banner(DX99), OleumTech**

**Gas/Flame Detection: MSA(X5000)/General Monitors(S5000)**

**Classified Area Cabling: Turck Process Wiring**

**Hazardous Area Process Displays: Precision Digital PD8-6000; Modbus Input Display PD8-6080**

**Pressure: Pressure P320, ITT Neo-Dyn Pressure Switches 100P, Wika E10**

**Valve Positioners: Siemens PS2**

**Flare Gas Metering: FCI Thermal Mass(ST51/100), Siemens**

**Ultrasonic(FS230G)**

**Flow: Siemens Coriolis(FC410)/Magmeters(3100)/Ultrasonic(ProbeLU)**

## **Remote Monitoring/POWER**

**Wireless Telemetry: Banner(DXM100), OleumTech**

**Remote Power: Ameresco, Mr Solar**

**Remote I/O: Turck, Moore Industries(NCS)**

## **Metering Stations**

**Control Valves/Regulators: Jordan high pressure control valves, Jordan Regulators**

**Pressure Transmitters: Pressure P320, Wika E10**

**Pressure Switches:** [Neo-Dyn](#)

**Metering Manifolds:** [Siemens](#)

**Wireless Monitors:** [Banner](#), [OleumTech](#)

**Temperature Transmitters:** [Moore Industries RTI2](#)

**Flow Check Meter:** : [FCI Thermal Mass\(ST51/100\)](#), [Siemens](#)

[Ultrasonic\(FS230G\)](#)

**Flow Metering:** [Veris](#), : [FCI Thermal Mass\(ST51/100\)](#), [Siemens](#)

[Ultrasonic\(FS230G\)](#)

## **Pipeline**



**Valve Positioners:** [Siemens PS2](#)

**I/P Converters:** [Moore Industries IPX2](#)(with Natural Gas Supply Pressure Certification)

**Cathodic Protection I/O:**[Moore Industries CPMS](#)

**Solar Panels:** [Ameresco](#), [Mr Solar](#)

**Temperature Transmitters:** [SSI T/C's RTD's](#),  
[Siemens](#), [Moore Industries RTI2](#)

**Pressure Transmitters** – [Pressure P320](#), [Wika E10](#)

**Pressure Switches:** [Neo-Dyn](#)

**Wireless Monitors:** [Banner](#), [OleumTech](#)

**Flow Monitors** – [FCI Thermal Mass\(ST51/100\)](#),  
[Siemens Ultrasonic\(FS230G\)](#)

**Gauges:** [Wika Temperature Gauges](#) and [Wika Pressure Gauges](#)